



Frieth Road
Marlow

www.bb-estateagents.co.uk



bonners & babingtons



Bonnors & Babingtons are delighted to offer to the market this superb five bedroom detached home situated in a highly sought-after elevated semi rural location approximately 2 miles north west of Marlow Town Centre. With stunning views over Munday Dean this property benefits from three bathrooms, double attached garage and room to extend further (STPP)

Frieth Road, Marlow, Buckinghamshire, SL7 2QU

Guide Price £1,700,000

- DETACHED COUNTY HOME
- FIVE BEDROOMS
- THREE BATHROOMS
- THREE RECEPTION ROOMS
- BREAKFAST KITCHEN WITH UTILITY ROOM
- HOME OFFICE
- ATTACHED DOUBLE GARAGE
- LOVELY SECLUDED GARDENS WITH RAISED PATIO ALFRESCO DINING AREA
- DRIVEWAY PARKING
- ELEVATED SEMI RURAL LOCATION
- RARELY AVAILABLE HOME



Anglers Court, Spittal Street, Marlow, Buckinghamshire, SL7 3HJ

01628 333800

marlow@bb-estateagents.co.uk



Marlow

Marlow town centre is a thriving and stylish riverside community with a comprehensive range of shops and excellent pubs and restaurants. Nearby Marlow Station has a regular train service to London Paddington via Maidenhead (from 44 mins) with links to the City of London, via the Elizabeth Line. Access to the M4 and M40 is via the A404(M) and London Heathrow is approximately 22 miles away.

There is a wide range of educational and recreational facilities in the area. Excellent local schools are numerous and include Sir William Borlase in Marlow.



Description

Nestled in an elevated semi-rural setting and enjoying a wonderful sense of privacy, this rarely available detached county home offers an exceptional blend of space, character, and family living.

Set behind a generous driveway with ample parking and an attached double garage, the property immediately impresses with its commanding position and peaceful surroundings. Inside, beautifully proportioned accommodation unfolds across the home, featuring three reception rooms that provide versatile spaces for both formal entertaining and relaxed everyday living.

At the heart of the home lies a delightful breakfast kitchen, thoughtfully designed for modern family life and complemented by a practical utility room. A dedicated home office offers the perfect environment for remote working, study, or creative pursuits.

The accommodation continues with five well-appointed bedrooms, served by a family bathroom and two en suites, providing comfort and flexibility for growing families and visiting guests alike.

Outside, the enchanting secluded gardens create a private oasis, beautifully landscaped to make the most of the tranquil setting. A raised patio alfresco dining area provides the ideal spot for outdoor entertaining, summer gatherings, or simply enjoying the surrounding countryside views.

Combining generous living space, a sought-after location, and a rare degree of privacy, this outstanding country home presents a unique opportunity to acquire a truly special family residence in an idyllic setting.





General Remarks and Stipulations

Tenure
Freehold

Post Code
SL7 2QU

EPC Rating
61

Viewing
Strictly by appointment with
Bonners & Babingtons

Local Authority
BCC

Fixtures and Fittings
Tbc

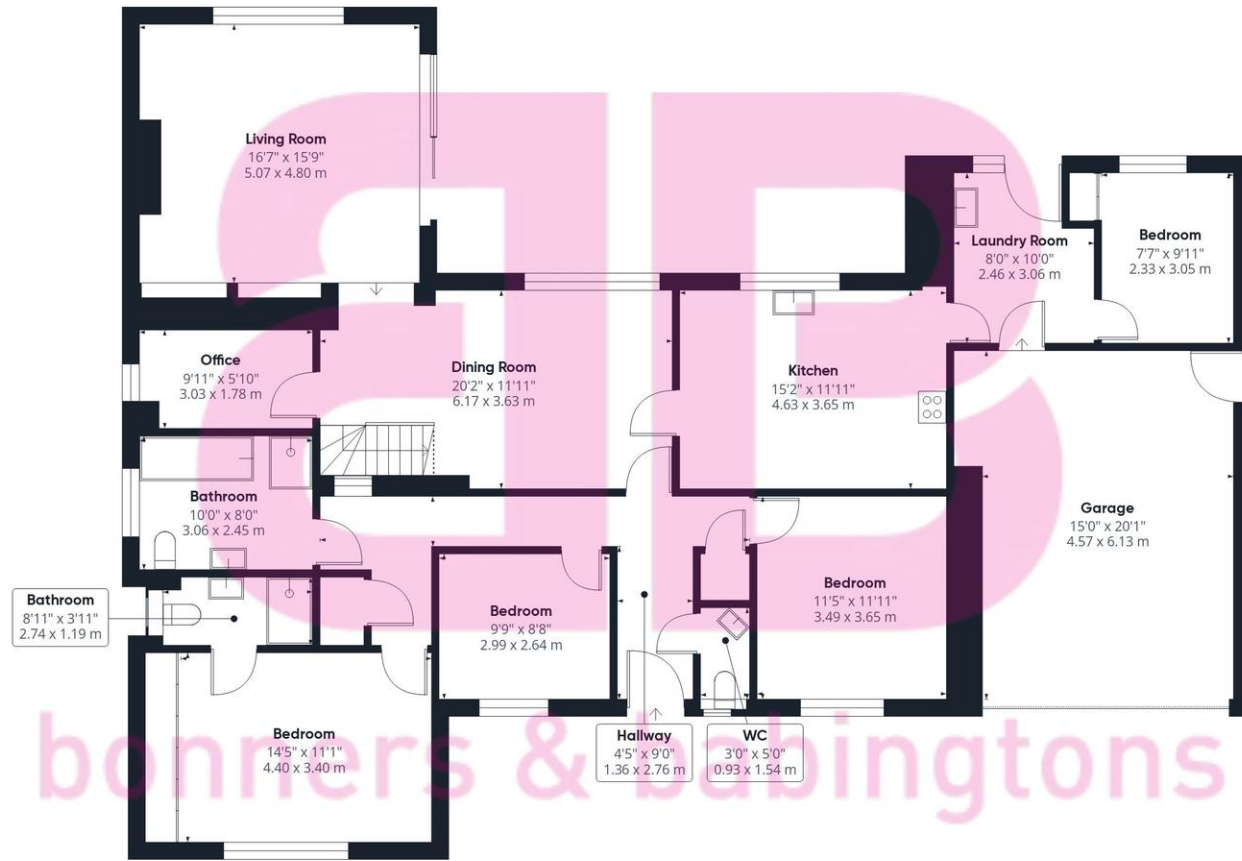
Important Notice

Bonners & Babingtons, their clients and any joint agents give notice that:

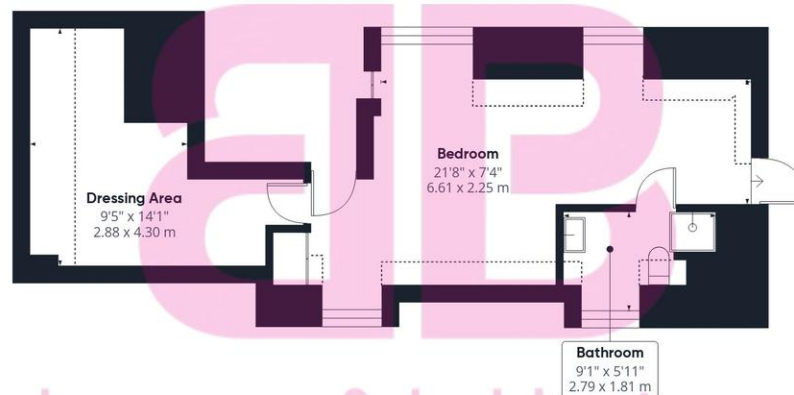
1. They are not authorised to make or give any representations or warranties in relation to the property either here or elsewhere, either on their own behalf or on behalf of their client or otherwise. They assume no responsibility for any statement that may be made in these particulars. These particulars do not form part of any offer or contract and must not be relied upon as statements or representations of fact.

2. Any areas, measurements or distances are approximate. The text, photographs and plans are for guidance only and are not necessarily comprehensive. It should not be assumed that the property has all necessary planning, building regulation or other consents and Bonners & Babingtons have not tested any services, equipment or facilities. Purchasers must satisfy themselves by inspection or otherwise.





Ground Floor



Floor 1



Approximate total area⁽¹⁾

2381 ft²

221.1 m²

Reduced headroom

89 ft²

8.3 m²

(1) Excluding balconies and terraces

Reduced headroom

----- Below 5 ft/1.5 m

Calculations reference the RICS IPMS 3C standard. Measurements are approximate and not to scale. This floor plan is intended for illustration only.

GIRAFFE360

