



bonners & babingtons

Braemar Court, Liston Road
Marlow

Braemar Court
Liston Road
Marlow
Buckinghamshire



Tenure: Leasehold

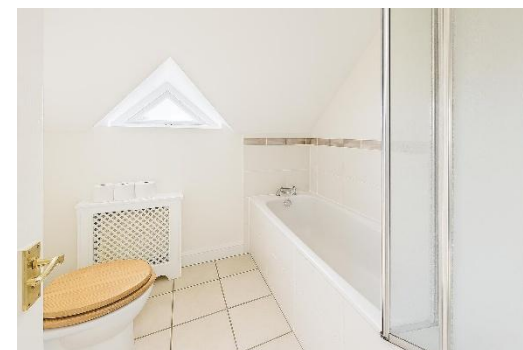
Price: £325,000

Annual Service Charge: TBC

Annual Ground Rent: TBC

Tax Band: D

EIR: 84



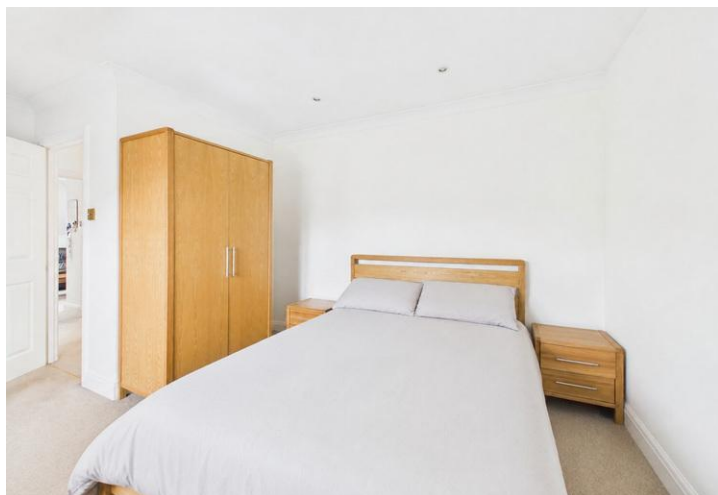
An impressive modern top floor apartment set within an attractive and well-maintained three-storey development. Ideally positioned, the property enjoys the benefit of a short, level walk to the heart of the High Street, with its excellent selection of shops, cafés, and everyday amenities close at hand.

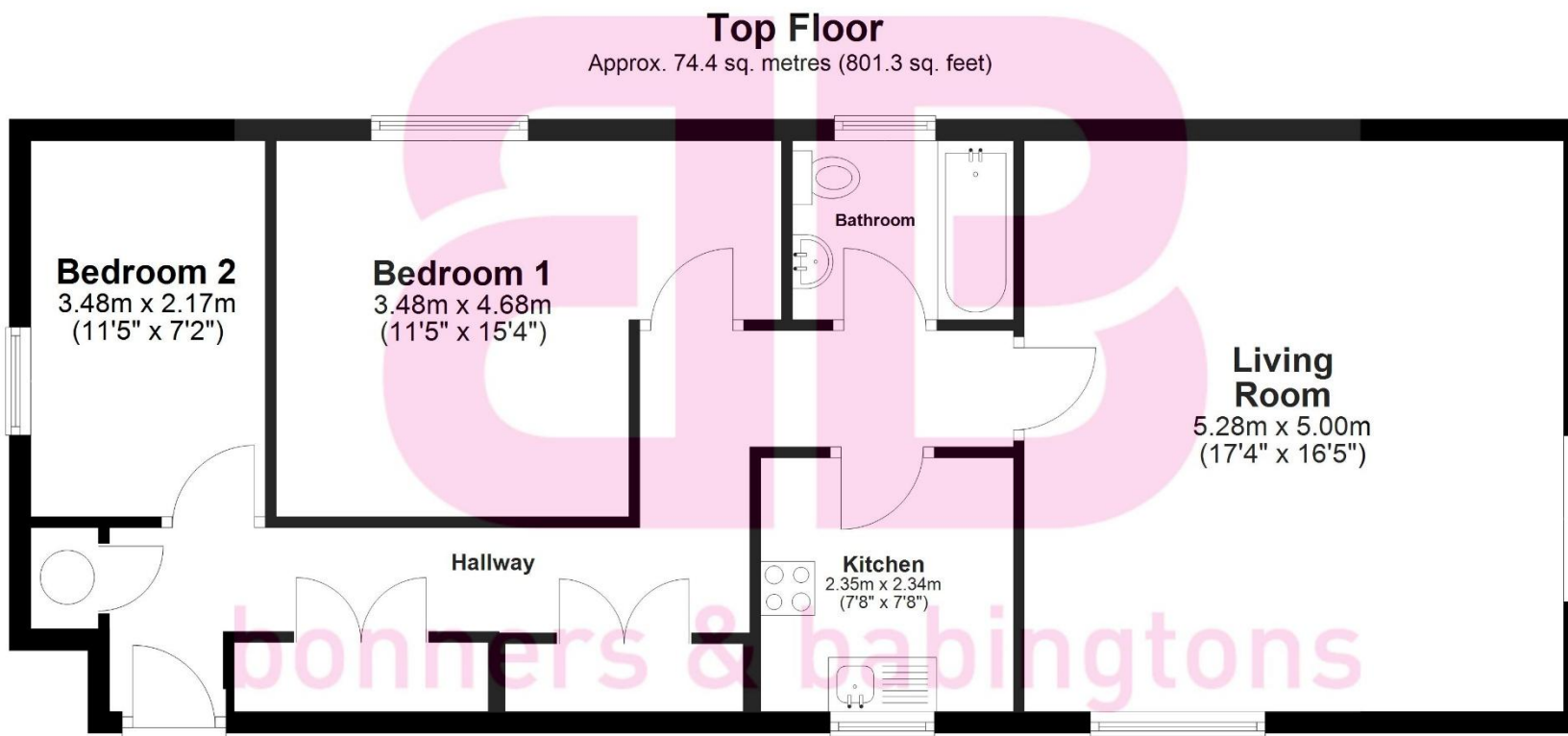
This superb apartment offers broad appeal, making it an ideal purchase for first-time buyers looking to step onto the property ladder, professionals seeking a stylish and conveniently located home, or those wishing to downsize without compromise.

Equally, it represents a highly attractive buy-to-let investment opportunity in a consistently sought-after location.

*Please be aware the photographs shown are Pre-occupancy.

Marlow town centre is a thriving and stylish riverside community with a comprehensive range of shops and excellent pubs and restaurants. Nearby Marlow Station has a regular train service to London Paddington via Maidenhead (from 44 mins) with links to the City of London, via the Elizabeth Line. Access to the M4 and M40 is via the A404(M) and London Heathrow is approximately 22 miles away. There is a wide range of educational and recreational facilities in the area. Excellent local schools are numerous and include Sir William Borlase in Marlow.





Total area: approx. 74.4 sq. metres (801.3 sq. feet)

Anglers Court, Spittal Street, Marlow, Buckinghamshire, SL7 3HJ

01628 333800

marlow@bb-estateagents.co.uk



Disclaimer

We endeavour to make our particulars accurate and reliable. They are for guidance only and are intended to give a fair overall summary of the property. They do not form part of any contract or offer, and should not be relied upon as a statement or representation of fact. Measurements, areas and distances are approximate and photographs provided for guidance only. No undertaking is given as to the structural condition of the property, or any necessary consents, or the operating ability or efficiency of any service, system or appliance. Prospective purchasers must satisfy themselves with regard to each of these points. If there is any particular aspect of the property about which you would like further information, please contact us, especially, before you travel to the property. B2170