



bonners & babingtons

Bream Close
Marlow

Bream Close
Marlow
Buckinghamshire
SL7 2BB

Tenure: Freehold

Price: £800,000

Local Authority: BCC

Tax Band: F

EIR: 69



Available to the market for the first time in nearly 50 years, this three-bedroom detached home occupies a sought-after position on the west side of Marlow and presents an exciting opportunity for updating or extension, subject to the usual planning permissions.

The property offers well-proportioned and versatile accommodation, including a spacious living room, a separate dining room ideal for entertaining, and a fitted kitchen complemented by a useful utility room. A conservatory provides additional living space with views over the garden, while a convenient cloakroom completes the ground floor. Upstairs, there are three bedrooms served by a family bathroom.

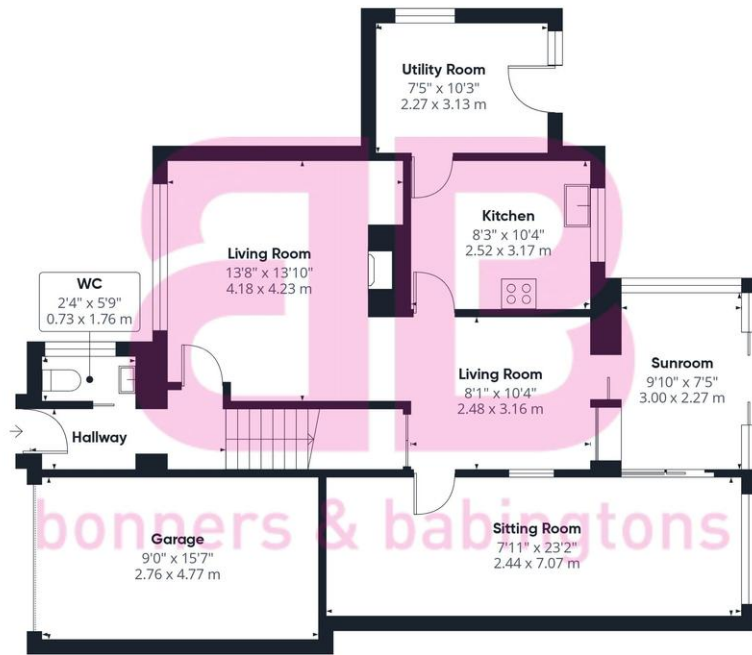
Situated within a short walk of Marlow High Street, the property enjoys easy access to a wide range of shops, cafés, and local amenities, making it perfectly suited for both families and those seeking a central yet peaceful location.

With significant potential to modernise and extend, this is a rare opportunity to create a long-term family home in a highly desirable setting.

There is a wide range of educational and recreational facilities in the area. Excellent local schools are numerous and include Sir William Borlase in Marlow.

Marlow town centre is a thriving and stylish riverside community with a comprehensive range of shops and excellent pubs and restaurants. Nearby Marlow Station has a regular train service to London Paddington via Maidenhead (from 44 mins) with links to the City of London, via the Elizabeth Line. Access to the M4 and M40 is via the A404(M) and London Heathrow is approximately 22 miles away.





Ground Floor



Floor 1



Approximate total area⁽¹⁾
1303 ft²
121 m²

(1) Excluding balconies and terraces

Calculations reference the RICS IPMS 3C standard. Measurements are approximate and not to scale. This floor plan is intended for illustration only.

GIRAFFE360



bonners & babingtons

Anglers Court, Spittal Street, Marlow, Buckinghamshire, SL7 3HJ

01628 333800

marlow@bb-estateagents.co.uk



Disclaimer

We endeavour to make our particulars accurate and reliable. They are for guidance only and are intended to give a fair overall summary of the property. They do not form part of any contract or offer, and should not be relied upon as a statement or representation of fact. Measurements, areas and distances are approximate and photographs provided for guidance only. No undertaking is given as to the structural condition of the property, or any necessary consents, or the operating ability or efficiency of any service, system or appliance. Prospective purchasers must satisfy themselves with regard to each of these points. If there is any particular aspect of the property about which you would like further information, please contact us, especially, before you travel to the property. B2170