



bonners & babingtons

Marlow Bottom
Marlow



Marlow Bottom Marlow Buckinghamshire SL7 3NA

Tenure: Freehold

Guide Price: £970,000

Local Authority: BCC

Tax Band: F

EPC Rating: C



This detached family home offers spacious and versatile accommodation, perfectly suited to modern family living. The property features four well-proportioned bedrooms, including a principal bedroom with en suite, alongside a contemporary family bathroom.

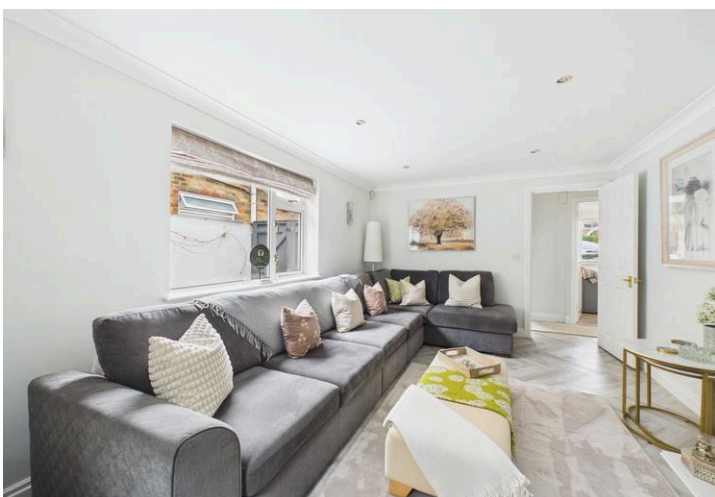
On the ground floor, the home benefits from three reception rooms, providing flexible space for a living room, formal dining room, family room or home office. The kitchen is complemented by a separate utility room with W.C., offering additional storage and practicality for everyday life.

Outside, the property enjoys a generous south-facing garden, ideal for relaxing or entertaining in the warmer months. A garden lodge provides a useful additional space that could be used as a home office, studio or gym. To the front, there is ample off-street parking for multiple vehicles.

Conveniently located close to local shops and everyday amenities, the property also falls within the sought-after Burford School catchment area, making it an excellent choice for families.

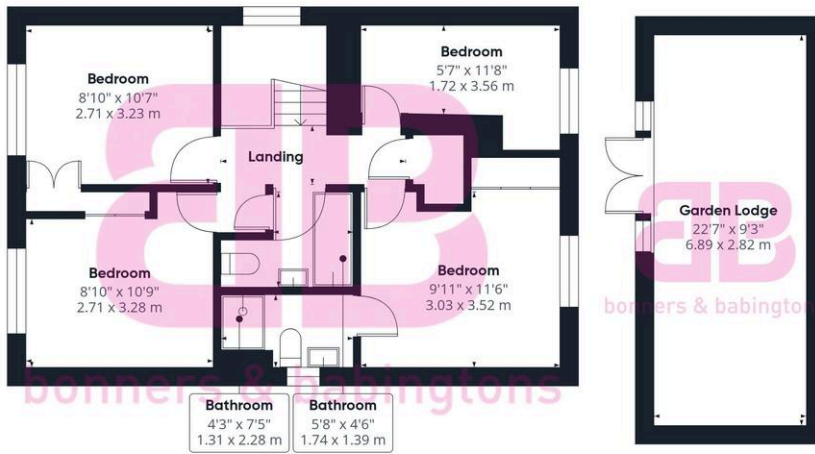
The town centre of Marlow is a few miles away and offers a more comprehensive range of facilities. Marlow is situated on the banks of the River Thames and is surrounded by beautiful countryside. It is a perfect place for enjoying the river, shopping with a difference, walking around historical buildings, or taking part in the many sports and recreational activities available within the local area.

The railway station in Marlow provides access to London (Paddington via Maidenhead) and access to the M4 and M40 is within a short drive. Excellent schools for children of all ages are available in Marlow and surrounding districts.





Ground Floor Building 1



Floor 1 Building 1



Ground Floor Building 2



Approximate total area⁽¹⁾
1530 ft²
142.2 m²

(1) Excluding balconies and terraces

Calculations reference the RICS IPMS 3C standard. Measurements are approximate and not to scale. This floor plan is intended for illustration only.

GIRAFFE360



bonners & babingtons

Anglers Court, Spittal Street, Marlow, Bucks, SL7 3HJ

01628 333800

marlow@bb-estateagents.co.uk



Disclaimer

We endeavour to make our particulars accurate and reliable. They are for guidance only and are intended to give a fair overall summary of the property. They do not form part of any contract or offer, and should not be relied upon as a statement or representation of fact. Measurements, areas and distances are approximate and photographs provided for guidance only. No undertaking is given as to the structural condition of the property, or any necessary consents, or the operating ability or efficiency of any service, system or appliance. Prospective purchasers must satisfy themselves with regard to each of these points. If there is any particular aspect of the property about which you would like further information, please contact us, especially, before you travel to the property. R2170