



bonners & babingtons

James Close
Marlow



James Close
Marlow
Buckinghamshire
SL7 1DA

Tenure: Freehold
Guide Price: £525,000
Local Authority: BCC
Tax Band: D
EIR: TBC



This beautifully extended terraced home offers generous and versatile living space, perfect for modern family life. With four well-proportioned bedrooms, including a loft conversion principal bedroom with en suite, there's room for everyone to relax in comfort. A family bathroom serves the remaining bedrooms.

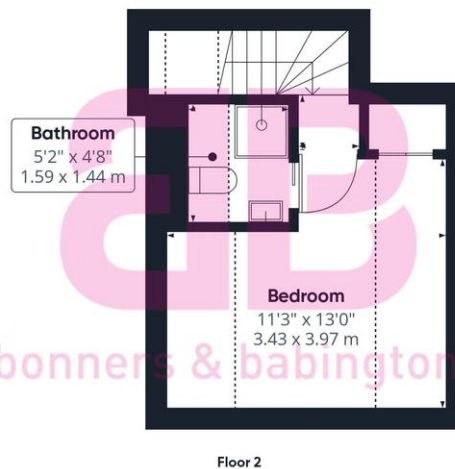
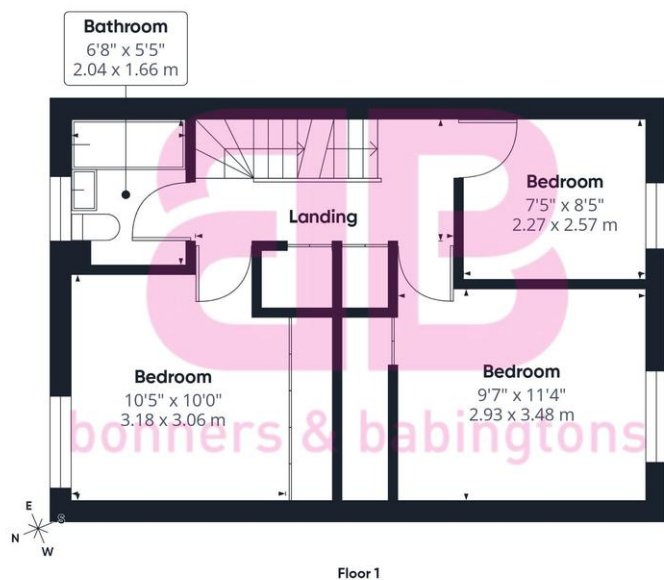
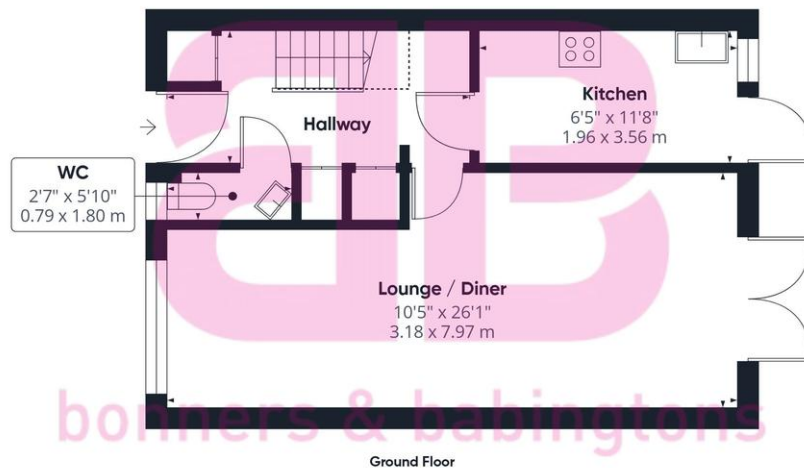
The heart of the home is the bright and welcoming lounge/diner — an ideal space for both everyday living and entertaining. The adjoining galley kitchen is thoughtfully arranged, providing practical workspace and storage.

To the rear, a private garden offers a peaceful retreat, perfect for outdoor dining, children's play, or simply unwinding. The property also benefits from off-street parking for two cars, adding valuable convenience.

Ideally positioned close to woodland and picturesque country walks, this home combines comfortable living with easy access to nature — an excellent choice for families and outdoor enthusiasts alike.

Marlow town centre is a thriving and stylish riverside community with a comprehensive range of shops and excellent pubs and restaurants. Nearby Marlow Station has a regular train service to London Paddington via Maidenhead (from 44 mins) with links to the City of London, via the Elizabeth Line. Access to the M4 and M40 is via the A404(M) and London Heathrow is approximately 22 miles away. There is a wide range of educational and recreational facilities in the area. Excellent local schools are numerous and include Sir William Borlase in Marlow.





Approximate total area⁽¹⁾

1019 ft²
94.7 m²

Reduced headroom

86 ft²
8 m²

(1) Excluding balconies and terraces

Reduced headroom
..... Below 5 ft/1.5 m

Calculations reference the RICS IPMS 3C standard. Measurements are approximate and not to scale. This floor plan is intended for illustration only.

GIRAFFE360



bonners & babingtons

Anglers Court, Spittal Street, Marlow, Buckinghamshire, SL7 3HJ

01628 333800

marlow@bb-estateagents.co.uk

rightmove

OnTheMarket

Zoopla.co.uk



Disclaimer

We endeavour to make our particulars accurate and reliable. They are for guidance only and are intended to give a fair overall summary of the property. They do not form part of any contract or offer, and should not be relied upon as a statement or representation of fact. Measurements, areas and distances are approximate and photographs provided for guidance only. No undertaking is given as to the structural condition of the property, or any necessary consents, or the operating ability or efficiency of any service, system or appliance. Prospective purchasers must satisfy themselves with regard to each of these points. If there is any particular aspect of the property about which you would like further information, please contact us, especially, before you travel to the property. B2170