



ab

bonners & babingtons

Station Road
Marlow



Station Road
Marlow
Buckinghamshire
SL7 1NN

Tenure: Freehold

Guide Price: £550,000

Local Authority: BCC

Tax Band: D

EIR: 47



Nestled in a quiet and secluded setting just 300 yards from the vibrant Marlow High Street, this delightful three to four bedroom detached chalet bungalow offers a rare opportunity to enjoy peaceful living within easy reach of local amenities. The property is offered with no onward chain, making it an ideal choice for those seeking a smooth and swift transaction.

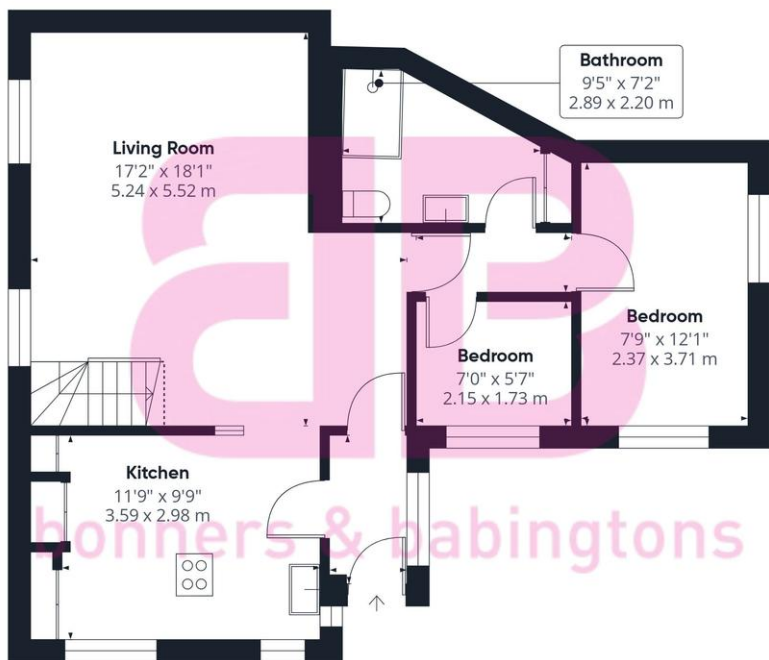
While the home would benefit from a small amount of cosmetic refurbishment, it boasts a well-proportioned layout with flexible accommodation across two floors. The living spaces are bright and welcoming, and the potential for personalisation is clear.

Outside, a private courtyard garden provides a tranquil retreat—perfect for relaxing or entertaining. Additionally, Marlow train station is less than half a mile away, offering convenient connections for commuters and travellers alike.

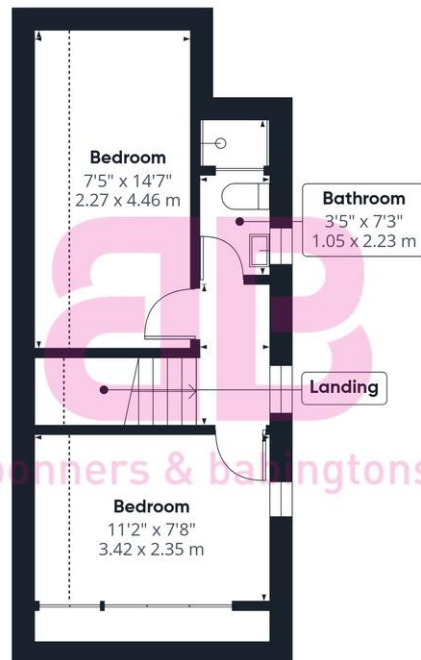
This is a superb opportunity to secure a characterful home in one of Marlow's most popular town centre roads.

Marlow town centre is a thriving and stylish riverside community with a comprehensive range of shops and excellent pubs and restaurants. Nearby Marlow Station has a regular train service to London Paddington via Maidenhead (from 44 mins) with links to the City of London, via the Elizabeth Line. Access to the M4 and M40 is via the A404(M) and London Heathrow is approximately 22 miles away. There is a wide range of educational and recreational facilities in the area. Excellent local schools are numerous and include Sir William Borlase in Marlow.





Ground Floor



Floor 1



Approximate total area⁽¹⁾

901 ft²
83.8 m²

Reduced headroom

43 ft²
4 m²

(1) Excluding balconies and terraces

Reduced headroom

..... Below 5 ft/1.5 m

Calculations reference the RICS IPMS 3C standard. Measurements are approximate and not to scale. This floor plan is intended for illustration only.

GIRAFFE360



bonners & babingtons

Anglers Court, Spittal Street, Marlow, Buckinghamshire, SL7 3HJ

01628 333800

marlow@bb-estateagents.co.uk



Disclaimer

We endeavour to make our particulars accurate and reliable. They are for guidance only and are intended to give a fair overall summary of the property. They do not form part of any contract or offer, and should not be relied upon as a statement or representation of fact. Measurements, areas and distances are approximate and photographs provided for guidance only. No undertaking is given as to the structural condition of the property, or any necessary consents, or the operating ability or efficiency of any service, system or appliance. Prospective purchasers must satisfy themselves with regard to each of these points. If there is any particular aspect of the property about which you would like further information, please contact us, especially, before you travel to the property. B2170