



Claymoor Park

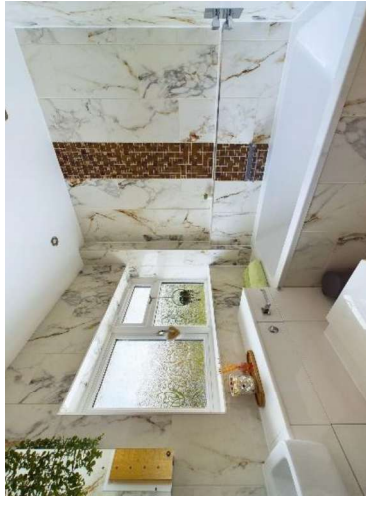
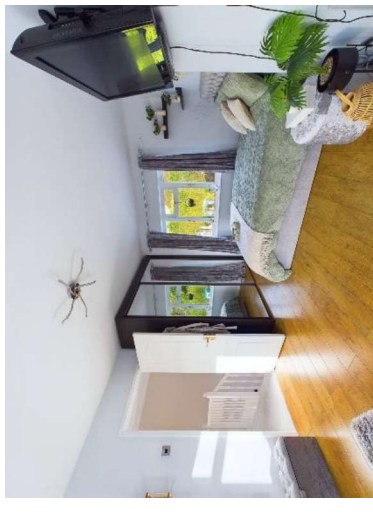
Marlow

BE

bonners & bairstow

**Claymoor Park
Marlow
Buckinghamshire
SL7 3DL**

- **Tenure: Freehold**
- **Guide Price: OIEO £700,000**
- **Local Authority: BCC**
- **Council Tax Band: F**
- **EPC Rating: C**



A superb 4 bedroom home beautifully remodelled by the current owners offering a lovely contemporary interior and well proportioned rooms, offered 'For Sale' with no upper chain. Claymoor Park is a peaceful, no through road and the residents own the 4.5 acres of communal grounds that surround the development which are perfect for family gatherings or an extension of the gardens. There is annual maintenance charge of £150 pa paid by all residents to maintain the attractive gardens.

The accommodation briefly comprises, entrance hall, shower room, double aspect living room, stunning 'open plan' kitchen/dining room, utility space, good size garage (currently converted to an office). On the first floor there is a landing with access to the loft space, dual aspect principal bedroom, 3 further bedrooms and a refitted family bathroom. Outside there is driveway parking to the front and a generous secluded rear garden with entertaining terrace ideal for Alfresco dining.

Situated a short drive of Marlow town centre & local schools approx. two miles with its array of bustling shops, & restaurants & cafes, including The Ivy Marlow Garden in the High Street, and Tom Kerridge's 'The Coach' & the renowned 2 Michelin Star 'The Hand & Flowers' both in West Street. High Wycombe town centre is also just over two miles away with Station to London Marylebone. The M40 motorway can be accessed at J4 Handy Cross within two miles, or J5 Stokenchurch within 5 miles for the London, Oxford or Heathrow commuter.

There is a wide range of educational and recreational facilities in the area. Excellent local schools are numerous and include Sir William Borlase Grammar School, Great Marlow School in Marlow and the John Hampden Grammar School in High Wycombe. Local recreational facilities include riding, cycling & walking in the Hambleden Valley; golf at Hartleyford & Wycombe Heights; Wycombe Sports centre at Marlow Hill, rowing at Marlow Rowing Club; and the National Sports centre at Bisham Abbey.

BONNERS & BABINGTONS OFFER
- A fabulous 4 bedroom home
recently remodelled by the
current owners offering a superb
contemporary interior situated on
Claymoor Park with the benefits of
4.5 acres of communal grounds
and excellent transport links and
offered 'For Sale' with NO UPPER
CHAIN.





Approximate total area¹⁾

1729.44 ft²

Reduced headroom

3.45 ft²

0.32 m²

(1) Excluding balconies and terraces

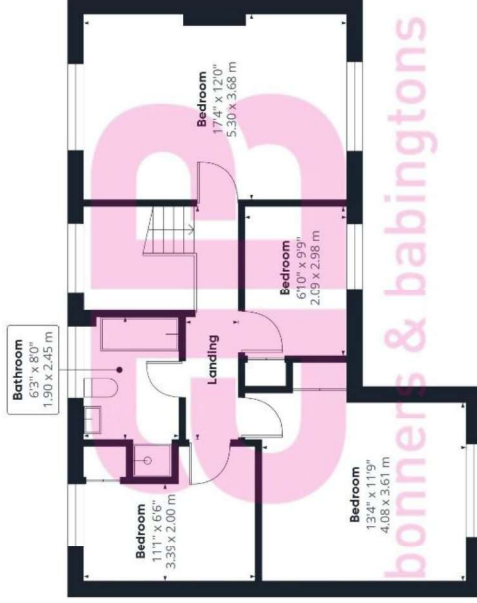
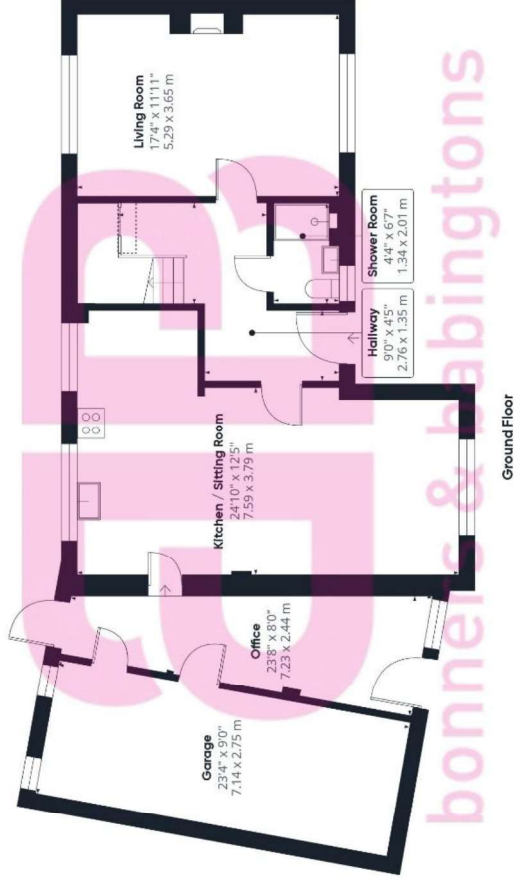
Reduced headroom

..... Below 5 ft/1.5 m

While every attempt has been made to ensure accuracy, all measurements are approximate, not to scale. This floor plan is for illustrative purposes only.

Calculations are based on RICS IPMS 3C standard.

GIRAFFE 360



3 Anglers Court, Spital Street,
Marlow, Bucks, SL7 3HJ

01628 333800

www.bb-estateagents.co.uk



bonners & babingtons

Disclaimer
We endeavour to make our particulars accurate and reliable. They are for guidance only and are intended to give a fair overall summary of the property. They do not form part of any contract or offer, and should not be relied upon as a statement or representation of fact. Measurements, areas and distances are approximate and photographs provided for guidance only. No undertaking is given as to the structural condition of the property, or any necessary consents, or the operating ability or efficiency of any service, system or appliance. Prospective purchasers must satisfy themselves with regard to each of these points. If there is any particular aspect of the property about which you would like further information, please contact us, especially, before you travel to the property. B2170