



bonners & babingtons

Findlay Mews  
Marlow



# Ferris House

Findlay Mews

Marlow

SL7 1AP

- Tenure:- Leasehold
- Guide Price £375,000
- Local Authority WDC
- EPC Rating B
- Lease 114 years
- Council Tax – Band C



A fabulous luxury penthouse apartment situated in an exclusive gated development built by Linden Homes in 2012 on the outskirts of the highly desirable riverside town of Marlow. The property offers a stylish light and airy contemporary interior with well-proportioned rooms and far reaching views from the balcony. The accommodation briefly comprises communal reception hall with security entry system, entrance hall with storage cupboards and access to the loft space, living room with French doors opening onto the balcony, 'open plan' well equipped kitchen with integrated appliances, master bedroom with fitted wardrobes, a further double bedrooms and superb bathroom. Outside, there is allocated parking for one car, a secure bike store and communal gardens. The property also benefits from gas central heating and double glazing. The property is accessed via electric security gates.

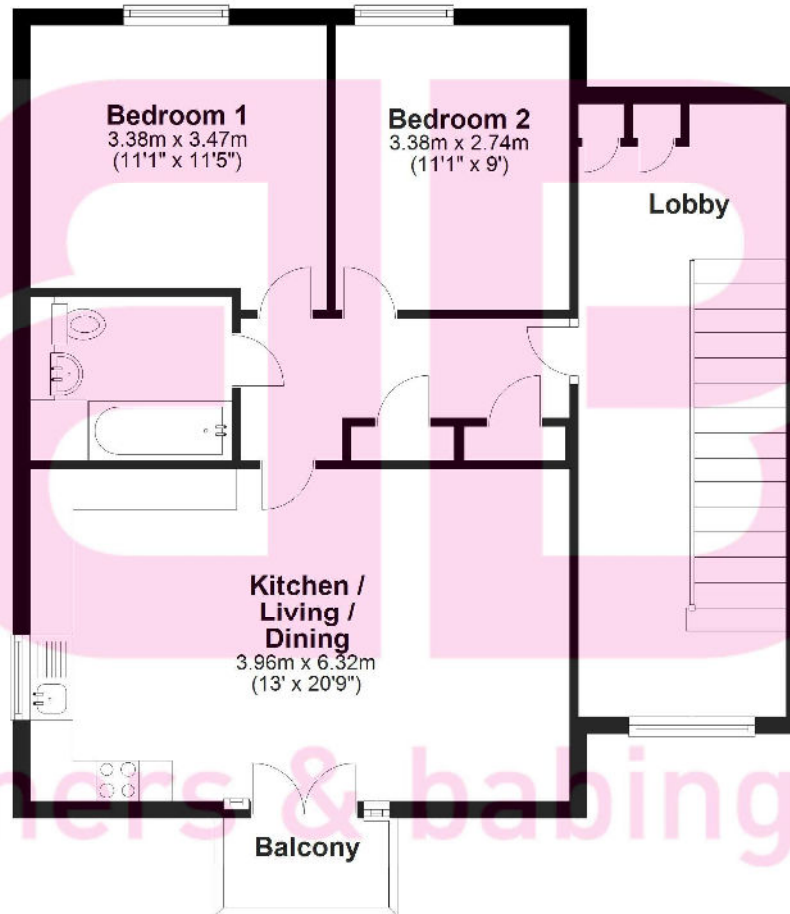
Marlow town centre is a thriving and stylish riverside community with a comprehensive range of shops and excellent pubs and restaurants. Nearby Marlow Station has a train service to London Paddington via Maidenhead (from 1hr 5mins). Maidenhead also offers a regular train service to London Paddington with links to the City of London, further enhanced when Crossrail opens in Maidenhead in 2018. Access to the M4 and M40 is via the A404(M) and London Heathrow is about 22 miles away. There is a wide range of educational and recreational facilities in the area. Excellent local schools are numerous and include Sir William Borlase in Marlow.

“A luxury penthouse apartment with a stylish contemporary interior situated in an exclusive gated development”



## Floor Plan

Approx. 58.3 sq. metres (627.9 sq. feet)



Total area: approx. 58.3 sq. metres (627.9 sq. feet)

NOT INCLUDING OUTBUILDINGS OR GARAGE This floorplan is not to scale. it is to be used for guidance and illustrative purposes only.  
Accuracy is not guaranteed.  
Plan produced using PlanUp.



bonners & babingtons



bonners & babingtons

3 Anglers Court, Spittal Street,  
Marlow, Buckinghamshire, SL7 3HJ



Zoopla.co.uk



01628 333800

www.bb-estateagents.co.uk

### Disclaimer

We endeavour to make our particulars accurate and reliable. They are for guidance only and are intended to give a fair overall summary of the property. They do not form part of any contract or offer, and should not be relied upon as a statement or representation of fact. Measurements, areas and distances are approximate and photographs provided for guidance only. No undertaking is given as to the structural condition of the property, or any necessary consents, or the operating ability or efficiency of any service, system or appliance. Prospective purchasers must satisfy themselves with regard to each of these points. If there is any particular aspect of the property about which you would like further information, please contact us, especially, before you travel to the property. B2170