



bonners & babingtons

Ferndale Close
Stokenchurch

Ferndale Close
Stokenchurch
Buckinghamshire
HP14 3NT

- Tenure:- Freehold
- Guide Price £475,000
- Tenure – Freehold
- EPC Rating TBC
- Council Tax Band E



A well designed 4 bedroom detached home located in a cul de sac in the popular village of Stokenchurch within easy walking distance of amenities.

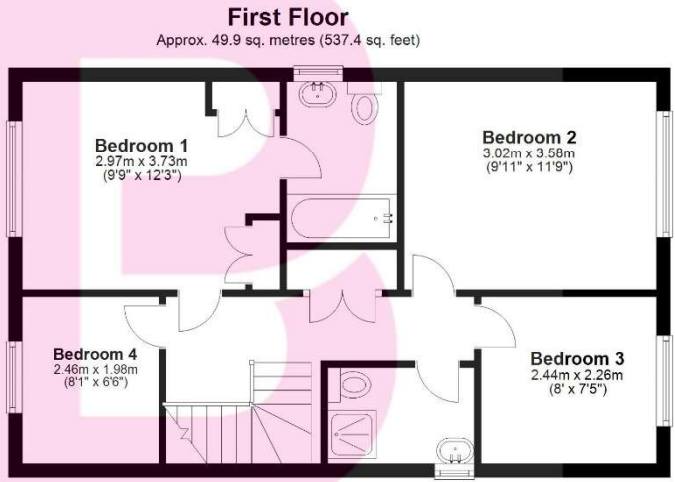
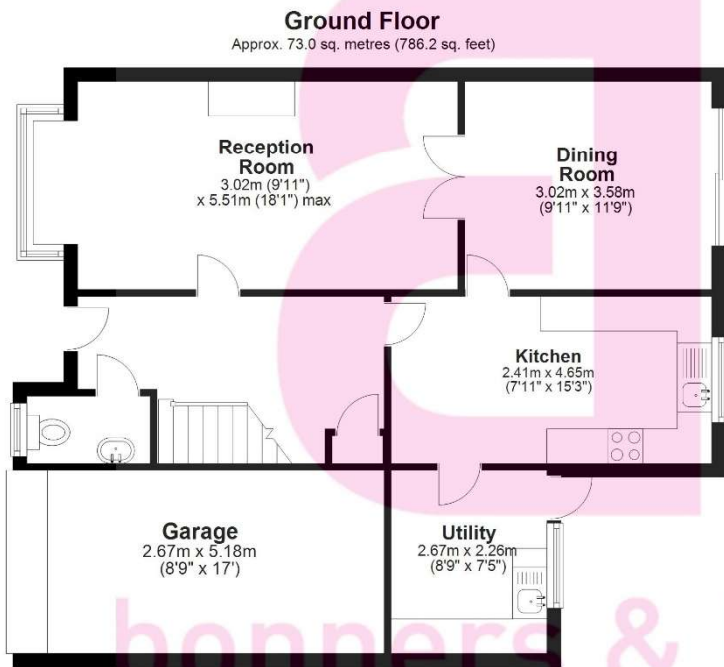
The accommodation briefly comprises entrance hall, cloakroom, living room, dining room, kitchen/breakfast room, utility room, landing, master bedroom with en suite, 3 further bedrooms, family bathroom, garage with block paved driveway and enclosed rear garden.

Stokenchurch is a Buckinghamshire village situated in the Chiltern Hills. The village facilities include shops for day-today use, a doctor's surgery, post office, library, Primary School, and 2 pubs. There is excellent walking and riding in the area. A more extensive range of facilities can be found in High Wycombe, approximately nine miles distant.

For the commuter there is easy access to the M40 motorway at Junction 5, providing links to Oxford, Birmingham and London. The nearest railway station is in High Wycombe with links to London, Marylebone and Birmingham.

A 4 bedroom detached home situated in an exclusive close within easy walking distance of amenities in the popular village of Stokenchurch with excellent transport links. Offered 'For Sale' with NO UPPER CHAIN





bonners & babingtons

Total area: approx. 123.0 sq. metres (1323.6 sq. feet)

This floorplan is not to scale. It is to be used for guidance and illustrative purposes only. Accuracy is not guaranteed. Plan produced using PlanUp.



bonners & babingtons

1 Karenza, Wycombe Road,
Stokenchurch, Buckinghamshire,
HP14 3DA



Disclaimer

We endeavour to make our particulars accurate and reliable. They are for guidance only and are intended to give a fair overall summary of the property. They do not form part of any contract or offer, and should not be relied upon as a statement or representation of fact. Measurements, areas and distances are approximate and photographs provided for guidance only. No undertaking is given as to the structural condition of the property, or any necessary consents, or the operating ability or efficiency of any service, system or appliance. Prospective purchasers must satisfy themselves with regard to each of these points. If there is any particular aspect of the property about which you would like further information, please contact us, especially, before you travel to the property. B2170

01494 485560

www.bb-estateagents.co.uk